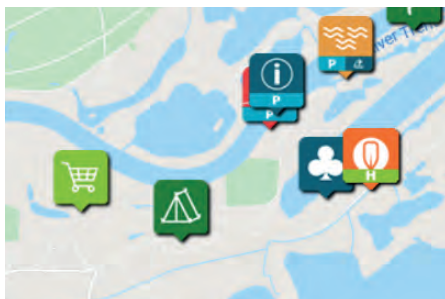


Planning Ahead

Understand your skill level and experience when planning your trip.



Create a detailed plan of your trip, check the weather, hazards and key points on your route.



Does the waterway require you to have a license or permit to paddle your craft?



At The Venue

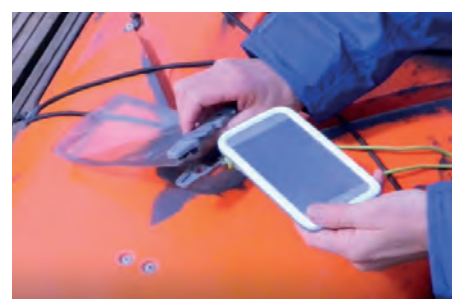
Ensure you and others are wearing a correctly fitted buoyancy aid.



Pack all the supplies you will need such as extra clothes, medication, food, etc. Ensure you have a means of communication in a waterproof bag.

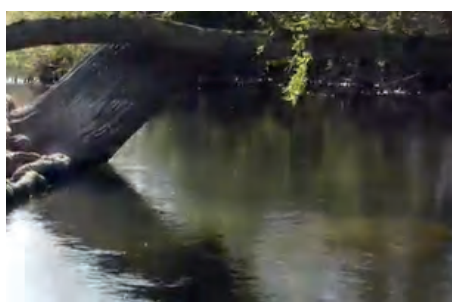


Having a means of communication such as a mobile phone is essential, remember to put in a waterproof bag and keep in your buoyancy aid.



On The Water

Ensure you leave plenty of time to deal with upcoming hazards.



Be aware of weirs, locks and sluices where you will need to get out of the water and walk around safely.



If you want to develop your skills and understanding, consider a course or guided tour with a British Canoeing Delivery Partner or affiliated club.

